



Spotlight on DMS

Dynafact Quarterly

Q4-09



Greetings from the Dynafact Team and Thank You for Helping Dynafact to Grow Again in 2009!

Dynafact showed continued positive growth in a generally difficult 2009. There is no doubt that these are challenging times for manufacturers and we are committed to developing the tools you need in order to help you get the most productivity out of your business! As Dynafact continues to grow, our new quarterly newsletter is just one of the ways we like to keep our lines of communication open but please never hesitate to call or email us. We think direct personal communication works the best!

Where we are now and where are we going?

When Dynafact began the development of DMS our goal was to combine our years of experience with computer algorithms in Industrial Scheduling with the wealth of knowledge available in our customer base. This approach would enable us to develop a ground up, advanced system with all the tools required to help our customers achieve full productivity potential. To do this, we partnered with a variety of diverse job shop manufactures to decide what capabilities the new system should have in order to make the most impact. Our customer Joint Action Development (JAD) sessions were held regularly to design and document the best solutions. With this in mind we started a phased approach to system development:



Phase 1: *Chose the architecture and start building the foundation for the system allowing for advanced scalability and backward compatibility to RSS/NaView. In addition, build in more capability as we go, with a strong “keep it simple” approach to the user interface and system ergonomics.*

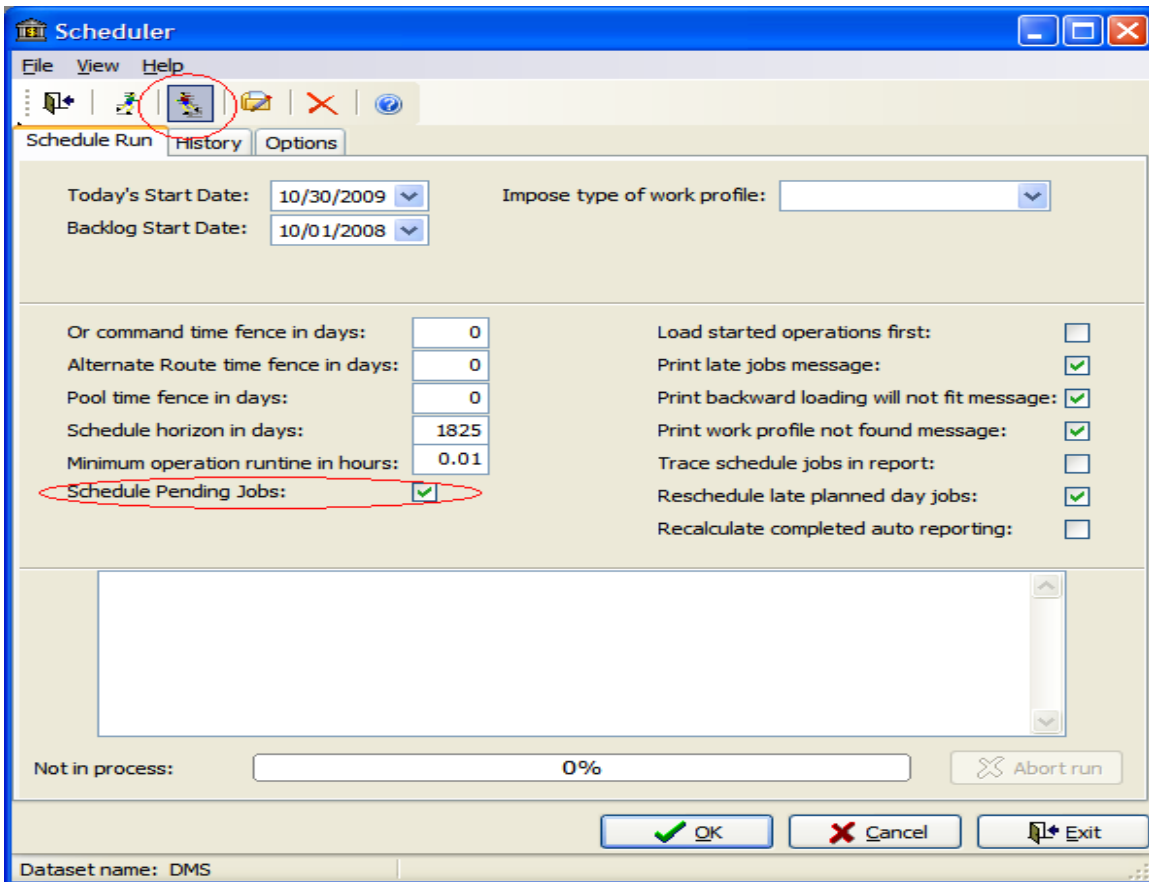
Phase 2: *Let customer requirements drive the legacy RSS/NaView features to develop and replace (this is a continuous process as customers upgrade to DMS)*

Phase 3: *Continue to build advanced capabilities with continued input from our customer base.*

Today: *DMS is now successfully in Production in many facilities. In many ways it now significantly surpasses RSS/NaView. We still have some capabilities to build and we will prioritize these based on your deployment requirements.*

Future: In the first half of 2010 we will deploy some advanced heuristic algorithms which will give you the capability to direct the scheduling engine with many different user defined profiles that the engine will automatically execute in sequence. The goal of this process will be to eliminate waste and increase throughput with existing resources. In some cases it may involve overtime options. In other cases it may involve the execution of non-contiguous time to utilize capacity. The scheduler will come back with the best fit based on many different options. It is the solid foundation of DMS that now enables us to build in awesome new tools!

Did you know? DMS not only provides detailed Advanced Planning and Scheduling but also high level Capacity Requirements Planning (CRP). CRP enables a demand schedule, typically provided by MRP to drive the resource requirements. Each job is infinitely backward loaded from its due date, regardless of whether the demand was in the past or not. This provides you with important Backlog detail.



An example of CRP

Suppose you have 150 hours of monthly scheduled demand on a critical machine and the machine is 75% loaded. Everything is good to go. But wait...you may have 100 hours of previously committed orders that have been placed in a Pending status due to engineering changes, customer confirmations or the like...simply run a CRP schedule and release Pending jobs. DMS will then be able to show you what is scheduled in front of the work Center but also how many hours of previously committed time you have in Backlog.

Work Center Near Term (3 Week) Capacity												Page 2 of 22
Sorted by Work Center, Operation Begin Date, Order, Sequence Number												
* Indicates Work Orders Currently At This Work Center												
Work Center: Assembly 01												
Order Number	Part Prefix	Part Number	Op Seq Number	Curr W C	Curr Seq	Begin Date	End Date	WO Qty	Allowed Hours	Cuml * Hrs	Cuml Hrs	Status
* 0008-1	Western CO	P1000	10	Assembly 01	10	19-Jan-09	4-Feb-09	10	0.00	0.00	0.00	C
0004-1	ABC	P1000	10	Assembly 01	10	28-Jul-09	28-Jul-09	10	0.00	0.00	0.00	C
0000P100	Western CO	P1000	10	Kitting	05	15-Jun-09	20-Jul-09	10	250.00	0.00	250.00	
0000P101	Western CO	P1000	10	Prepare	05	1-Sep-09	11-Sep-09	10	250.00	0.00	500.00	
0001	ABC	P1000	10	Kitting	05	15-Sep-09	25-Sep-09	10	50.00	0.00	50.00	
0004	ABC	P1000	10	Assembly 01	10	23-Feb-10	1-Mar-10	10	40.00	40.00	820.00	
0037	ABC	P1000	40	Team 01	10	4-Mar-10	31-Mar-10	10	200.00	40.00	820.00	
0038	ABC	P1000	40	Team 01	10	4-Mar-10	31-Mar-10	10	200.00	40.00	1020.00	
0004-2	ABC	P1000	40	Team 01	10	4-Mar-10	31-Mar-10	10	200.00	40.00	1220.00	
0011	ABC	P1000	10	Assembly 01	10	16-Mar-10	22-Mar-10	10	40.00	80.00	1260.00	
0015	ABC	PBR-1000-9	10	Assembly 01	10	16-Mar-10	22-Mar-10	10	40.00	120.00	1300.00	
0025	Western CO	P1000	10	Assembly 01	10	18-Mar-10	19-Mar-10	10	10.00	130.00	1310.00	
TBE 1	Tampa Co	P1000	20	Assembly 01	20	18-Mar-10	18-Mar-10	5	2.50	132.50	1312.50	
TBE 1	Tampa Co	P1000	20	Assembly 01	20	19-Mar-10	19-Mar-10	5	2.50	132.50	1315.00	
0026	ABC	P1000	10	Assembly 01	10	23-Mar-10	24-Mar-10	10	10.00	142.50	1325.00	
TBE4	Tampa Co	P1000	20	Assembly 01	20	25-Mar-10	26-Mar-10	10	5.00	147.50	1330.00	
TBE5	Eastern CO	P1000	20	Assembly 01	20	25-Mar-10	26-Mar-10	10	5.00	152.50	1335.00	
TBE6	Tampa Co	P1000	20	Assembly 01	20	25-Mar-10	26-Mar-10	10	5.00	157.50	1340.00	
0007-1	Western CO	P1000	10	Assembly 01	10	8-Jul-10	14-Jul-10	10	40.00	197.50	1380.00	
0007-3	Western CO	P1000	10	Assembly 01	10	8-Jul-10	14-Jul-10	10	40.00	237.50	1420.00	
0007-4	Western CO	P1000	10	Assembly 01	10	8-Jul-10	14-Jul-10	10	40.00	277.50	1460.00	
0007-5	Western CO	P1000	10	Assembly 01	10	8-Jul-10	14-Jul-10	10	40.00	317.50	1500.00	
0007-6	Western CO	P1000	10	Assembly 01	10	8-Jul-10	14-Jul-10	10	40.00	357.50	1540.00	

Summary: Assembly 01	
Total Number of Parts:	220
Total at WC hours:	358
Total not at WC hours:	1,500
Total allowed Hours:	1,540
Previous WC Hours:	0
Total Backlog Hours:	1,340
Total Short Matl (WC 0190) Hours:	0
Total Quality Rec (WC 0195) Hours:	0
Total OV (WC 0501) Hours:	0
Total Kit (WC 0198) Hours:	0

Note: For example purposes the above report shows a schedule run date in April 2010.



Dynafact Support:

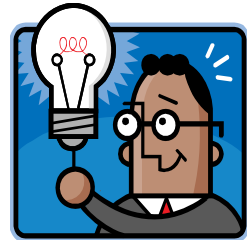
We would like to remind everyone to use our support email address if you require Dynafact support: support@dynafact.com. This will ensure that the person on support for the day will receive your message and will be able to respond quickly to your needs.

As always, if you have any questions or comments, please feel free to contact us at anytime. We would love to hear from you!

How many developers does it take to change a light bulb?

None, that's a hardware problem!

Thanks Ken!



About Dynafact: Dynafact is a fully insured, debt free, privately owned and operated company and is certified with the Controlled Goods Directorate of Canada. This certification licenses Dynafact to handle Data and view Processes that are considered sensitive or secure. For more information or to see Dynafact's listing proceed to the following link: <http://ssi-iss.tpsgc-pwgsc.gc.ca/dmc-cgd/index-eng.html>