



## Greetings from the Dynafact Team!

Dynafact remains committed to developing the tools required in order to help you get the most productivity out of your business! DMS has been designed with a solid foundation enabling us to focus on deploying advanced algorithms quickly.

Do you have a specific scheduling challenge? Please do not hesitate to call or email us. We think direct personal communication works the best!



## Dynafact to present again at the Deltek international Conference in May!

Once again this year we will be showcasing the DMS technology at Deltek's "Insight 2010" international conference in Washington DC. Dynafact has been enhancing Deltek's powerful CostPoint system with Advanced Planning and Scheduling capability for over two years now and we are proud of our shared customer installs! For more information on the Deltek conference please visit their website at [www.deltek.com](http://www.deltek.com)

## Technology Update

Question: How can I get these late orders in on time?

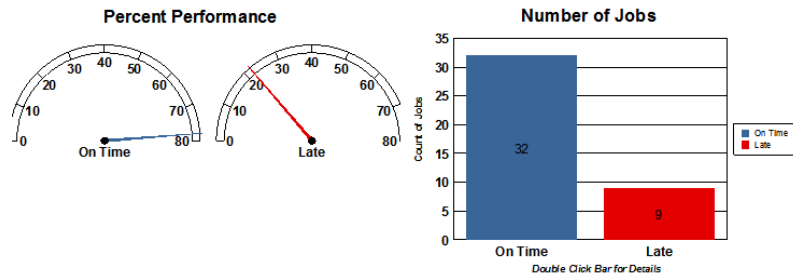
Answer: A new DMS schedule run capability automatically executes alternate Resource Profiles (such as overtime options) in order to bring late orders in on time. DMS will then report back to you the decisions made and the net results.



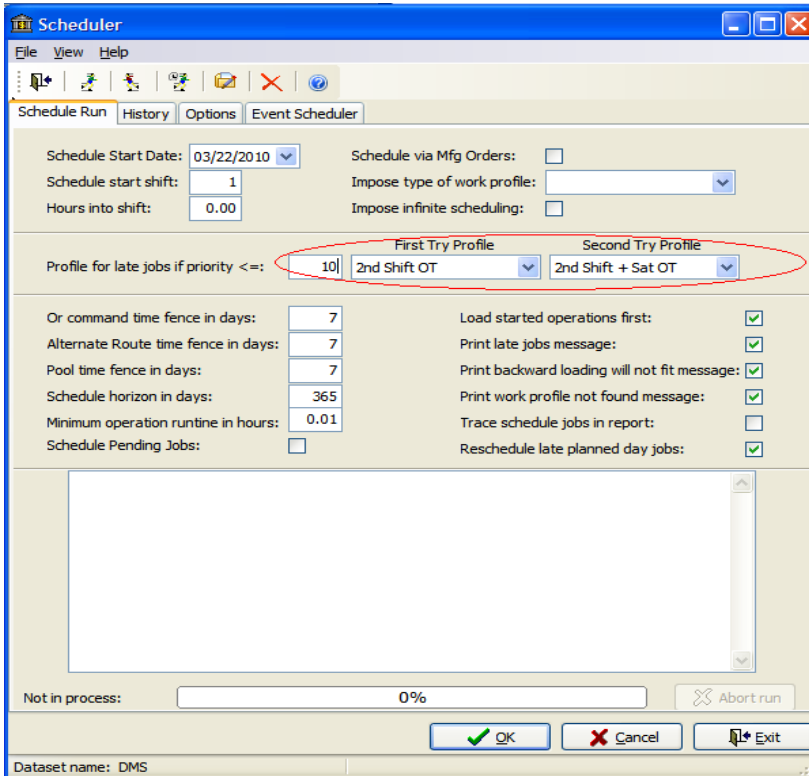
Let's run through an example...

An On Time Performance chart shows that the current schedule projects a 79% on time status:

### On-time Performance

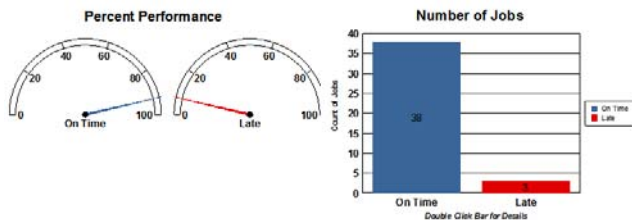


A profile schedule is then run with instructions for the DMS scheduling engine to execute overtime options for late orders with a job priority greater than 10.

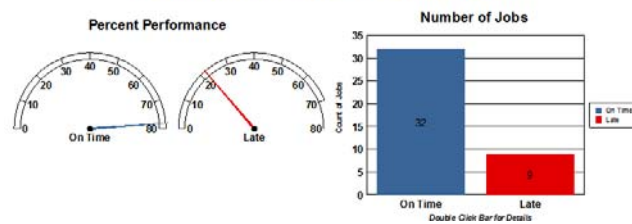


The net results (upper chart shows new schedule results, lower shows the Baseline data (old schedule)):

### On-time Performance



### Baseline On-time Performance

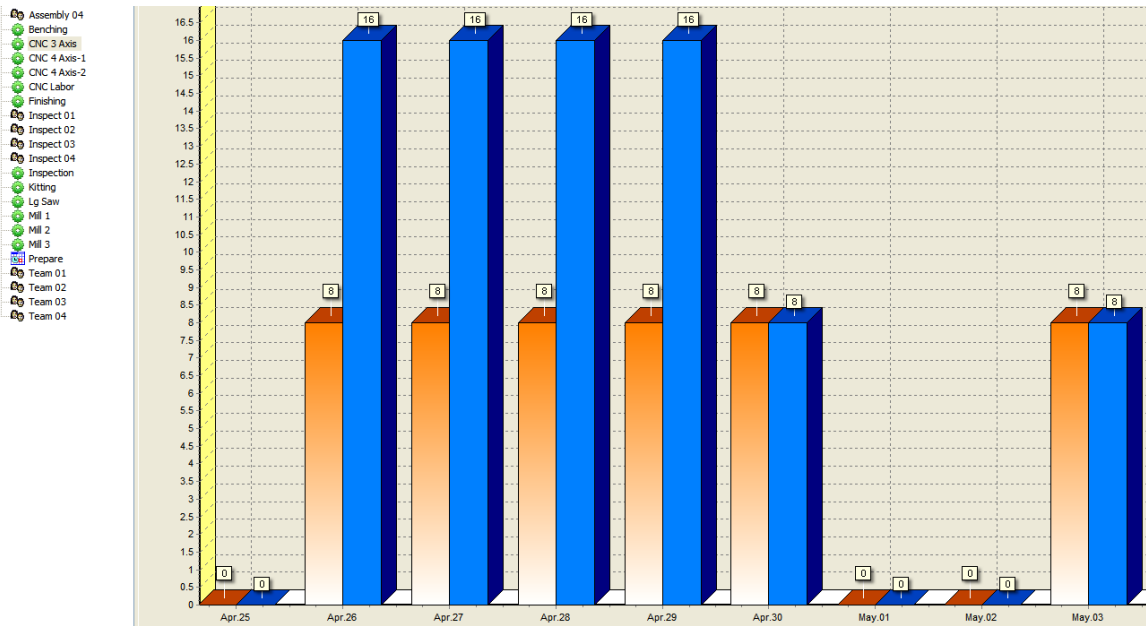


Then you can drill down to the details. What are the exact results? What jobs were pulled in and by how much? What Overtime schedule do we need to work?

**Pulled in**

| Order                                    | Net Change | By (Days) | Start     | End       | Baseline End | Due Date  | Was     | By (Days) | Now     | By (Days) |
|--|------------|-----------|-----------|-----------|--------------|-----------|---------|-----------|---------|-----------|
| 0001                                     | Pulled in  | -8        | 25-Mar-10 | 6-Jul-10  | 14-Jul-10    | 30-Jun-10 | Late    | -14       | Late    | -8        |
| <i>Calendar Used: 2nd Shift + Sat OT</i> |            |           |           |           |              |           |         |           |         |           |
| 0002                                     | Pulled in  | -82       | 22-Mar-10 | 1-Sep-10  | 22-Nov-10    | 6-Sep-10  | Late    | -77       | On Time | 5         |
| <i>Calendar Used: 2nd Shift + Sat OT</i> |            |           |           |           |              |           |         |           |         |           |
| 0008                                     | Pulled in  | -11       | 22-Mar-10 | 17-May-10 | 28-May-10    | 28-May-10 | On Time | 0         | On Time | 11        |
| <i>Calendar Used: Regular Work</i>       |            |           |           |           |              |           |         |           |         |           |
| 0011                                     | Pulled in  | -14       | 24-Mar-10 | 25-Jun-10 | 9-Jul-10     | 30-Jun-10 | Late    | -9        | On Time | 5         |
| <i>Calendar Used: 2nd Shift OT</i>       |            |           |           |           |              |           |         |           |         |           |
| 0012                                     | Pulled in  | -53       | 22-Mar-10 | 22-Mar-10 | 14-May-10    | 30-Apr-10 | Late    | -14       | On Time | 39        |
| <i>Calendar Used: 2nd Shift OT</i>       |            |           |           |           |              |           |         |           |         |           |
| 0013                                     | Pulled in  | -6        | 13-Apr-10 | 12-May-10 | 17-May-10    | 3-May-10  | Late    | -14       | Late    | -9        |
| <i>Calendar Used: 2nd Shift + Sat OT</i> |            |           |           |           |              |           |         |           |         |           |
| 0030                                     | Pulled in  | -16       | 22-Mar-10 | 7-Jun-10  | 23-Jun-10    | 11-Jun-10 | Late    | -12       | On Time | 4         |
| <i>Calendar Used: Regular Work</i>       |            |           |           |           |              |           |         |           |         |           |
| 9992                                     | Pulled in  | -20       | 6-Jul-10  | 13-Jul-10 | 2-Aug-10     | 30-Jun-10 | Late    | -33       | Late    | -13       |
| <i>Calendar Used: 2nd Shift + Sat OT</i> |            |           |           |           |              |           |         |           |         |           |
| 9994                                     | Pulled in  | -66       | 22-Mar-10 | 23-Jun-10 | 18-Aug-10    | 25-Jun-10 | Late    | -54       | On Time | 2         |
| <i>Calendar Used: Regular Work</i>       |            |           |           |           |              |           |         |           |         |           |
| 9999                                     | Pulled in  | -31       | 23-Apr-10 | 7-May-10  | 7-Jun-10     | 28-May-10 | Late    | -10       | On Time | 21        |
| <i>Calendar Used: 2nd Shift OT</i>       |            |           |           |           |              |           |         |           |         |           |

The DMS Capacity Graph graphically shows the results:



**Dynafact Support:**

We would like to remind everyone to use our support email address if you require Dynafact support: [support@dynafact.com](mailto:support@dynafact.com). This will ensure that the person on support for the day will receive your message and will be able to respond quickly to your needs.

As always, if you have any questions or comments, please feel free to contact us at anytime. We would love to hear from you!

*About Dynafact: Dynafact is a fully insured, debt free, privately owned and operated company and is certified with the Controlled Goods Directorate of Canada. This certification licenses Dynafact to handle Data and view Processes that are considered sensitive or secure. For more information or to see Dynafact's listing proceed to the following link: <http://ssi-iss.tpsgc-pwgsc.gc.ca/dmc-cgd/index-eng.html>*